

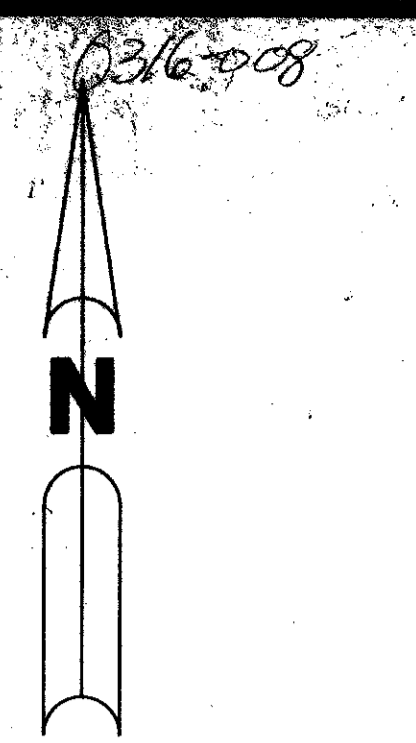
KEY MAP
N.T.S.

(A P.U.D.) RAINBOW LAKES - TRACT "A"

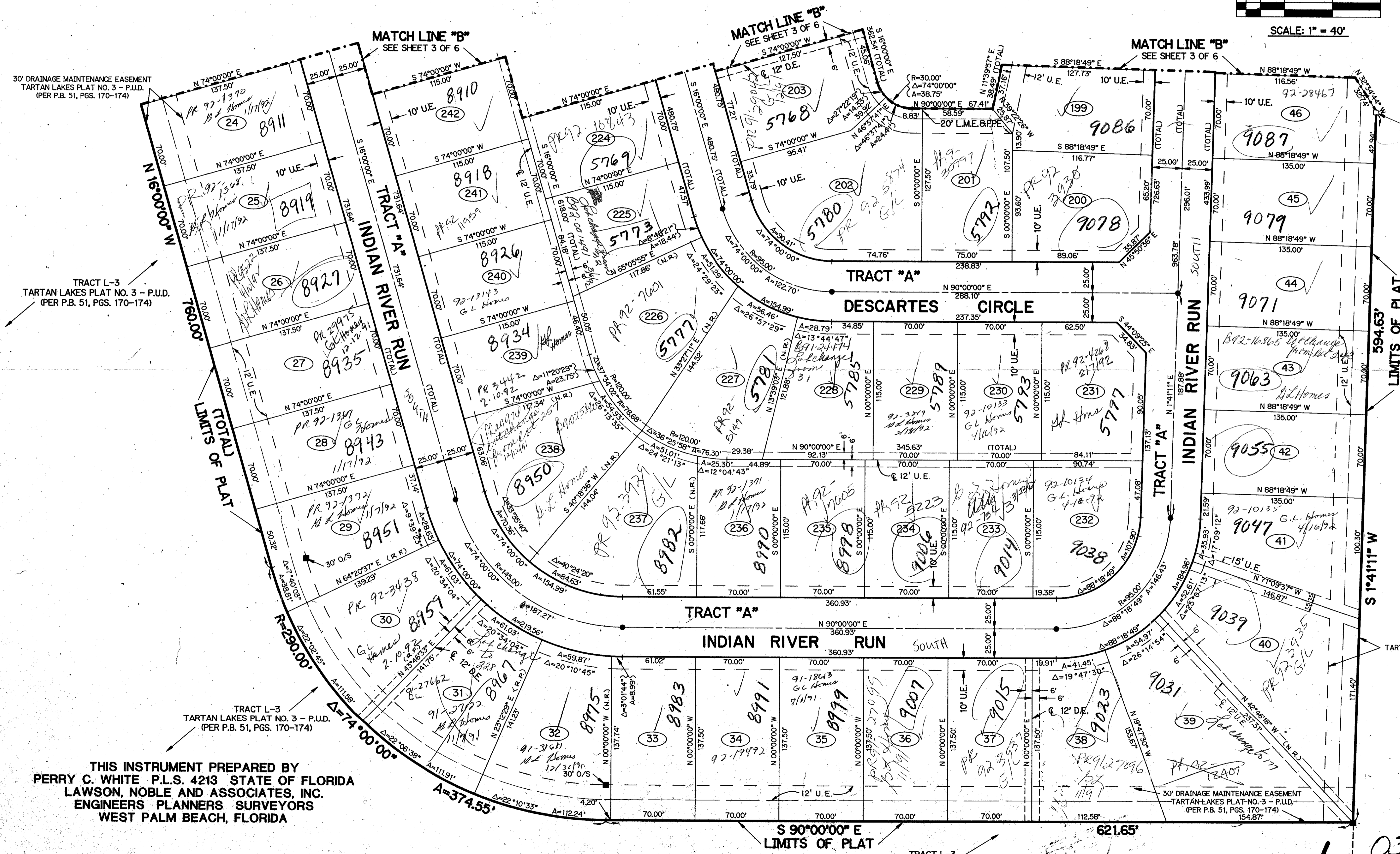
A REPLAT OF A PORTION OF TRACT "A" ACCORDING TO THE PLAT OF TARTAN LAKES PLAT NO. 3 - P.U.D. AS RECORDED IN PLAT BOOK 51, PAGES 170 THROUGH 174 INCLUSIVE, OF THE PUBLIC RECORDS OF PALM BEACH COUNTY, FLORIDA.
SECTIONS 14 AND 23, TOWNSHIP 45 SOUTH, RANGE 42 EAST

SHEET 4 OF 6

MAY, 1989



SCALE: 1" = 40'



SUBDIVISION: Rainbow Lakes - Tract "A"
 BOOK: 64
 FLOOD ZONE: B
 QUAD: 74-34
 SE: 79-177
 PUD NAME: Rainbow Lakes - Tract "A"
 DATE: 12/23/145/14

THIS INSTRUMENT PREPARED BY
 PERRY C. WHITE P.L.S. 4213 STATE OF FLORIDA
 LAWSON, NOBLE AND ASSOCIATES, INC.
 ENGINEERS PLANNERS SURVEYORS
 WEST PALM BEACH, FLORIDA

PET. 79-177C
 ALLOCATION #0001

25' BUFFER
 TARTAN LAKES PLAT NO. 3 - P.U.D.
 (PER P.B. 51, PGS. 170-174)

RAINBOW LAKES - TRACT "A" 04/116

APPROVED BY
 [Signature]

0316-008